

Challenger Door

Process Control Document

Date: 1/15/18

Manual Latching of Power Ramp Assist

BY:AY

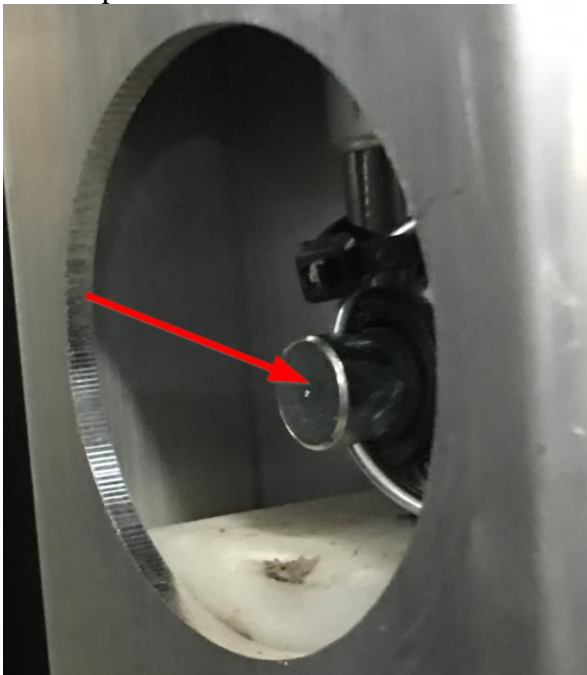
In case of power failure, follow these steps to manually open your power ramp.

Be sure to have 2 people involved, one on the interior and one on the exterior

1. Remove the Black plastic plug in the upper portion of the tube assembly to expose actuator pin.



2. Pull the pin to release the actuator from the cable assembly. At this point the ramp is released.



3. When closing, pull the latch pin that is located on the ramp that slides into the latching slot. To manually lock, install the latch pin in the lower hole of the bracket to lock it into the tube once door is pushed closed.



4. Once power is restored, run the actuator to the open position and remove the black plastic plug in the lower section of the tube assembly.



5. Re-insert the pin to connect the cable assembly back to the actuator.



6. Install the latch pin back into the upper hole of the latch pin bracket for the automatic latching system.

