


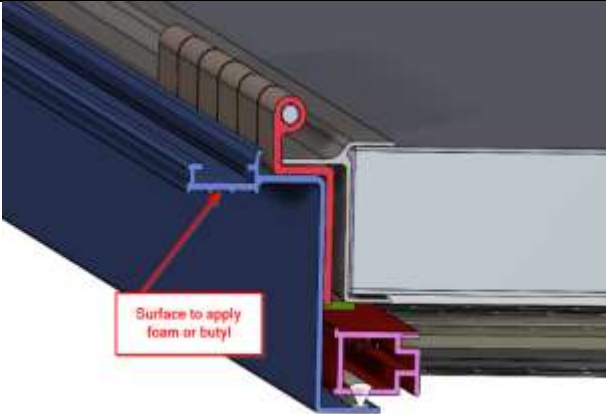
Challenger Door

450 Series Installation Guide

Date: 4/16/19

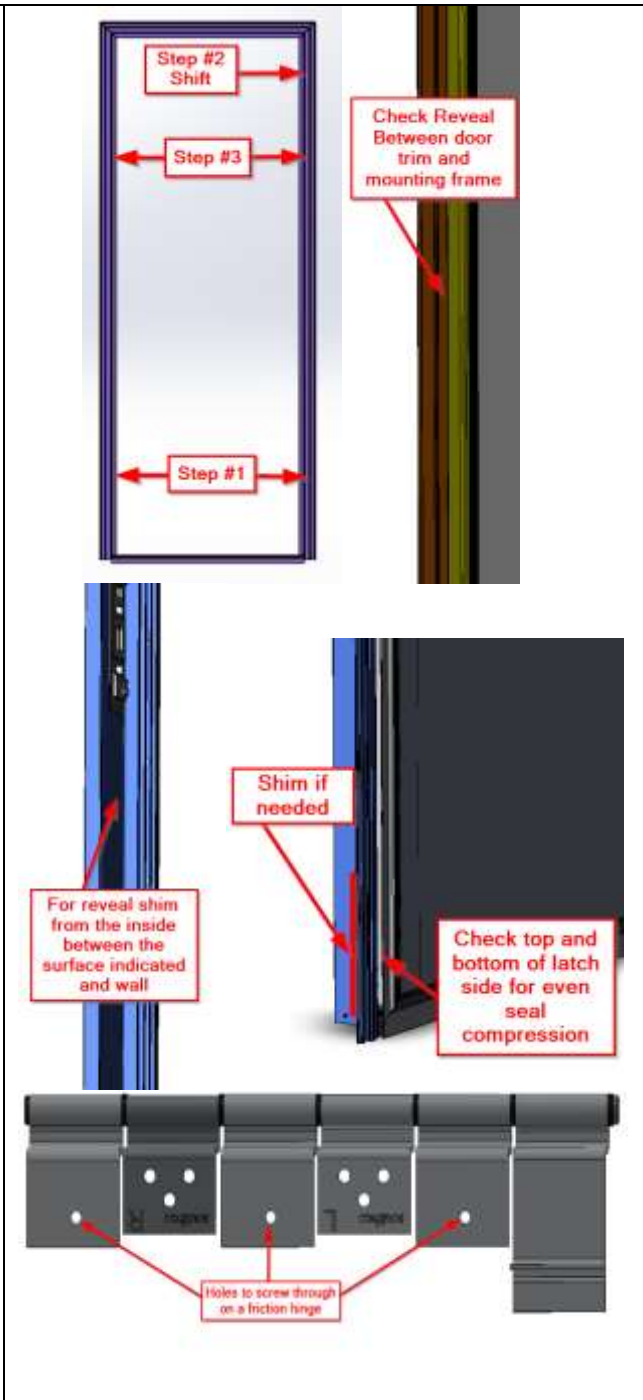
BY:AWY

****Be sure to check that Rough Opening measures to the size stated on the door label, and is square and even on all sides. Challenger Door sizes doors to properly fit whatever opening our customer has. Be sure that the opening has proper framework supporting it (ie; aluminum/steel tubing or lumber). For any clarification on how to measure Rough Opening visit <https://www.challengerdoor.com/measure/> ****

Tools and Supplies needed	<ul style="list-style-type: none">- screw gun- #8 or #10 screws 1" to 1½" long- closed cell foam tape or butyl tape- water sealing caulk and caulk gun- plastic or wood shims 1/8" to 3/16" thick.	
Place door in rough opening	<ol style="list-style-type: none">1. Clean outer and install closed cell foam or butyl. This helps to insure a tight seal once door is installed.2. Place door in opening tight to the bottom and centered from side to side.	

Secure door into opening

1. Start with 2 screws one on each side toward the bottom.
2. Shift the top of door toward hinge side until door is lifted slightly off of the frame (to avoid sagging and rubbing on the threshold).
3. Add one screw on each side toward the top to secure door.
4. Check to see that reveal is consistent on all sides. If reveal is inconsistent, add shims where needed between outer frame and rough opening to achieve the consistency needed.
****all shims need to be secured through the frame and them to keep them secure****
5. Check that door is properly sealing. If the door is not sealing evenly, add shims between the mounting frame and the face of the sidewall to square up the door.
6. Once reveal (gap) is consistent and the door is sealing evenly, finish adding screws in punched holes.
7. Shims must be installed behind door striker to ensure a solid surface for latch to strike on.
8. If the door has friction hinges shim behind the hinge and add a #10 screw through the hole provided.
9. Install screw cover.
10. If drip cap is included, be sure to install it over the screw cover overlapping it by at least $\frac{1}{4}$ ".



Adjusting latch

To achieve proper seal compression, the latch may need to be adjusted from time to time.

1. If equipped with a Travel Trailer Latch, simply loosen both screws slightly and slide inward or outward as needed. Do not simply tap with a hammer or blunt object as this could distort the striker and/or cause it to come loose.

The following Latch options are for motor vehicles and have been tested by the latch manufacturer to pass 206 FMVSS standards. They have 2 closed positions, be sure when adjusting that these can be closed fully to the second “click”.

2. If equipped with a 2-pin FMVSS latch, loosen both screws slightly. This latch has the adjustability for up, down, and side to side. Adjust for seal compression, being sure that the up and down adjustment is proper so that door does not rub on the top or bottom.

3. If equipped with a FMVSS Rotary Latch, use a 5/8” wrench to loosen the striker bolt (adjust as needed) up, down, and side to side.

Latch

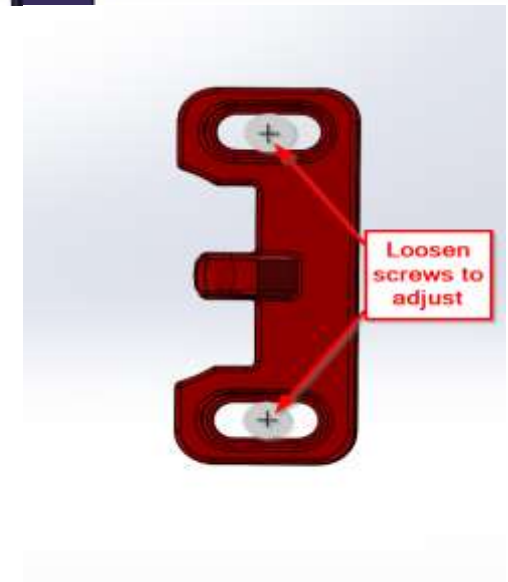
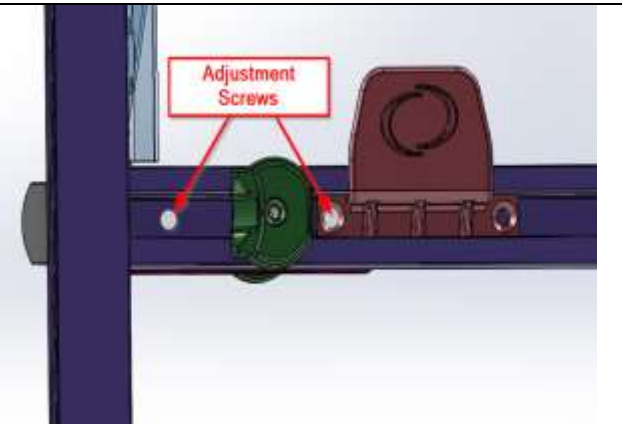


Striker



Adjust Screen door latch

1. Check to be sure that the screen door latches independently.
2. If adjustment is needed loosen 2 screws on the latch and slide to the side to adjust.
3. Check to be sure that when the screen door is attached to the door it will open and close along with the main door.
4. If the screen door catches on the mounting frame when you open the door, the catch on the door will need to be adjusted.
5. If adjustment is needed loosen the 2 screws on the catch and slide it toward the hinge side to allow the catch to more fully engage the latch plunger. This allows the screen door to move as one with the door itself.



Sealing the Door

1. To ensure proper bond. Clean the outside of the mounting frame and sidewall.
2. Caulk all sides of the mounting frame to the unit sidewall to ensure a water tight seal.
3. Caulk the top of the window and down the sides at least 4".