

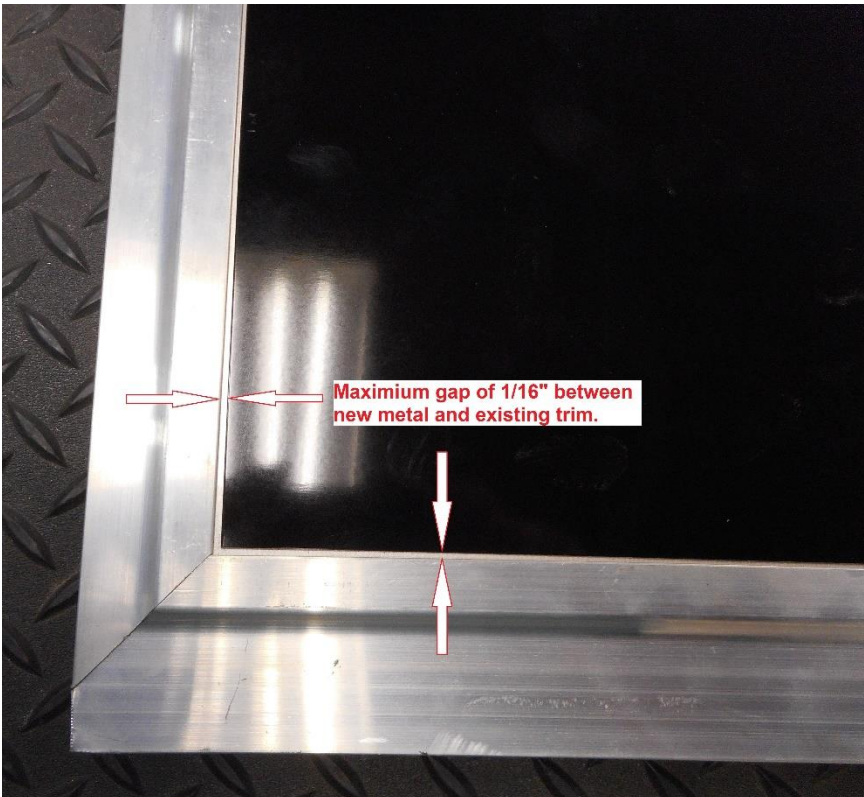
Challenger Door

Process Control Document

10/15/2015

Keith Schwartz

Skin Locker Installation



Cut new metal to fit inside existing trim on door. Leave a maximum gap of 1/16" gap. Apply new metal to door with contact spray adhesive.



Cut Skin Locker to correct length to match trim on door. Clean/prep with alcohol. Install .045" x 1/2" VHB tape to inside surface.

Challenger Door

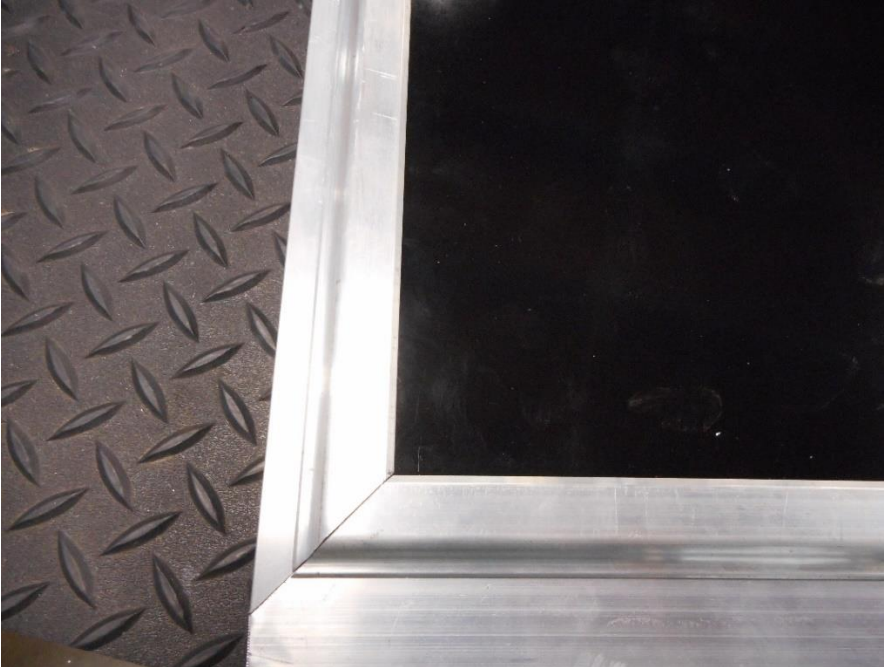


Process Control Document

10/15/2015

Keith Schwartz

Skin Locker Installation



Clean/prep door trim with alcohol and install Skin Locker. Make sure to line up corners.



Using roller press Skin Locker firmly onto door trim.