

Challenger Door

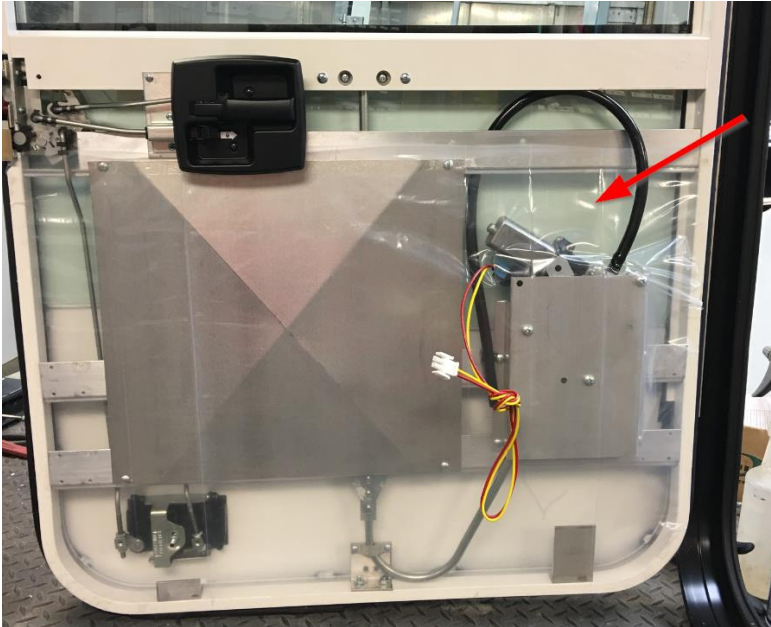
Process Control Document

5/19/2016

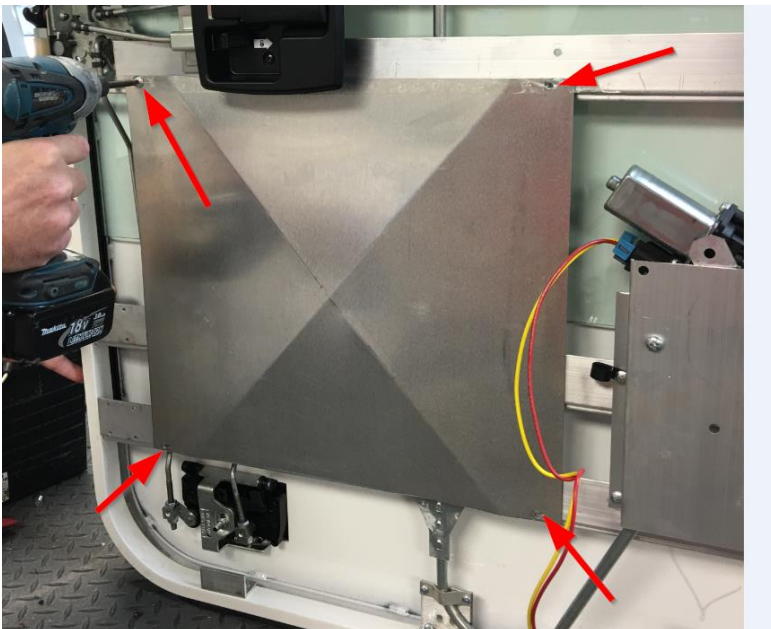
Andy Yoder

Window Run Channel Replacement

1. Start by removing the plastic cover



2. Remove metal cover by removing the screws on the 4 corners



Challenger Door

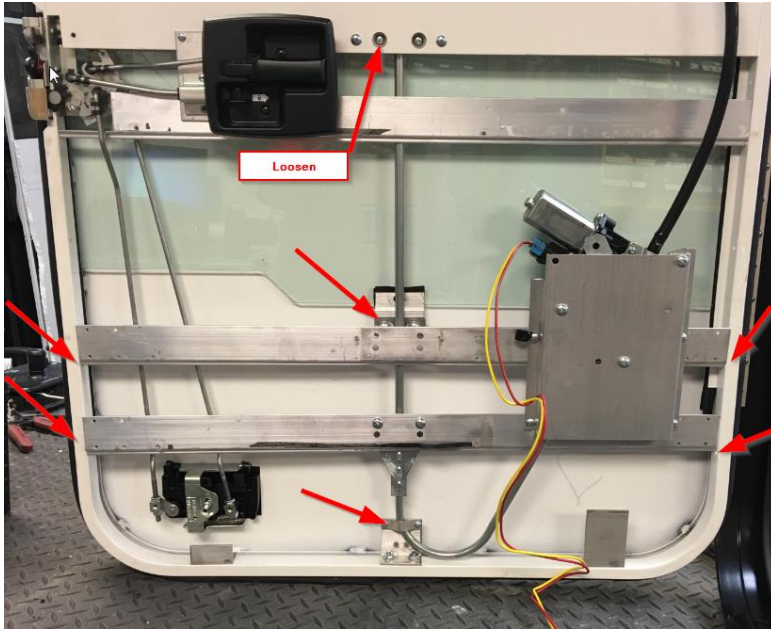
Process Control Document

5/19/2016

Andy Yoder

Window Run Channel Replacement

3. Remove motor assembly: remove all screws except for the two specified on the top rail, when pulling the mechanism out loosening the top 2 screw will allow it to slide out.



4. Remove screws in hinge side of latch rails, remove existing window channel to access screws in the hinge side window track.



Challenger Door

Process Control Document

5/19/2016

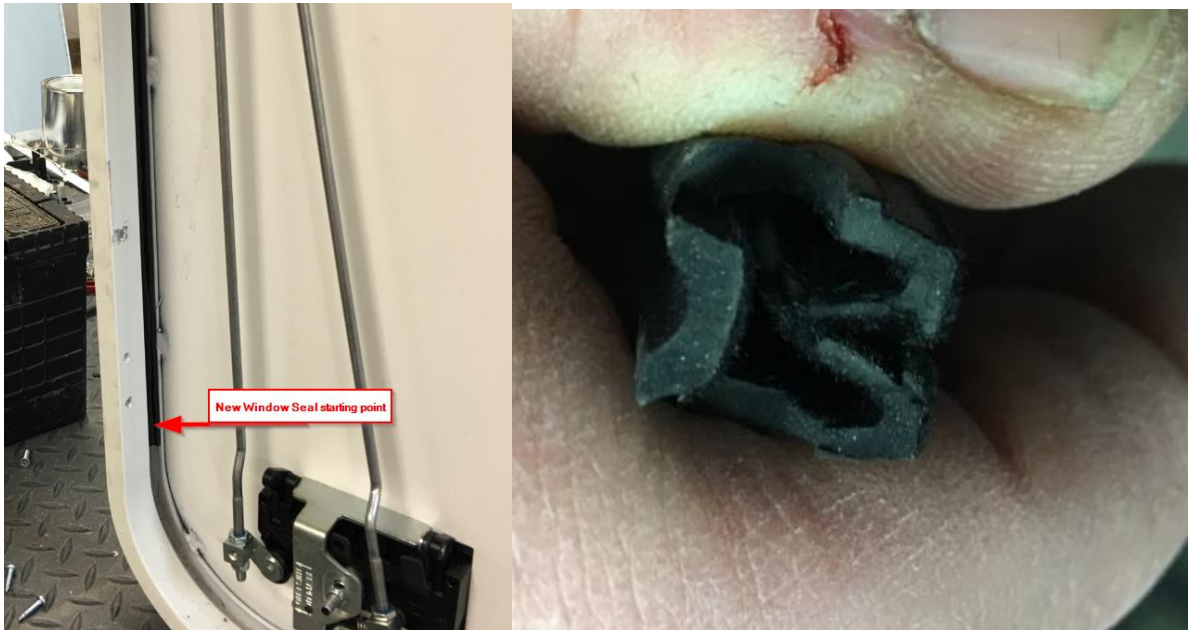
Andy Yoder

Window Run Channel Replacement

5. Slide window and window track through hinge side access



6. Start the new run channel seal, starting at the bottom of the latch side (seal folds to make a "V" shape to lock in)



Challenger Door

Process Control Document

5/19/2016

Andy Yoder

Window Run Channel Replacement

7. Once window seal is to the top cut a "V" to make a 90 degree turn in the track



8. Run seal across the top track and leave hang for window replacement



Challenger Door

Process Control Document

5/19/2016

Andy Yoder

Window Run Channel Replacement

9. Insert window and track back in the way it came out and screw the track back in



10. Insert seal into the track and push down as far as possible into the window cavity (silicone may be used if necessary)



Challenger Door

Process Control Document

5/19/2016

Andy Yoder

Window Run Channel Replacement

11. Once you are unable to slide seal down, raise window up past the bottom of the seal, grab seal with one hand and slide glass downward with the other to help push the seal all the way down (seal does stretch some in this process so move slowly to avoid too much stretching)



12. Finally re-assemble parts: Handle rails, motor mounts and rails, cover panel, and protective plastic.