

Challenger Door

Process Control Document

Date :02/15/13

Process Title: Sheet :600 series Nova latch install guide

BY: Mike S.

Fig.1

Place Nova front into the routed hole in the door.

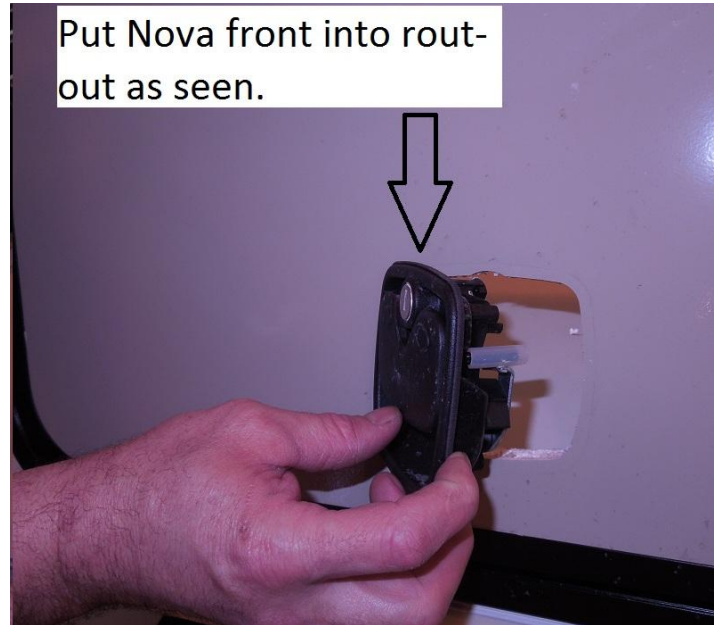


Fig.2

Next install the 600 series spacer onto back of latch & door.

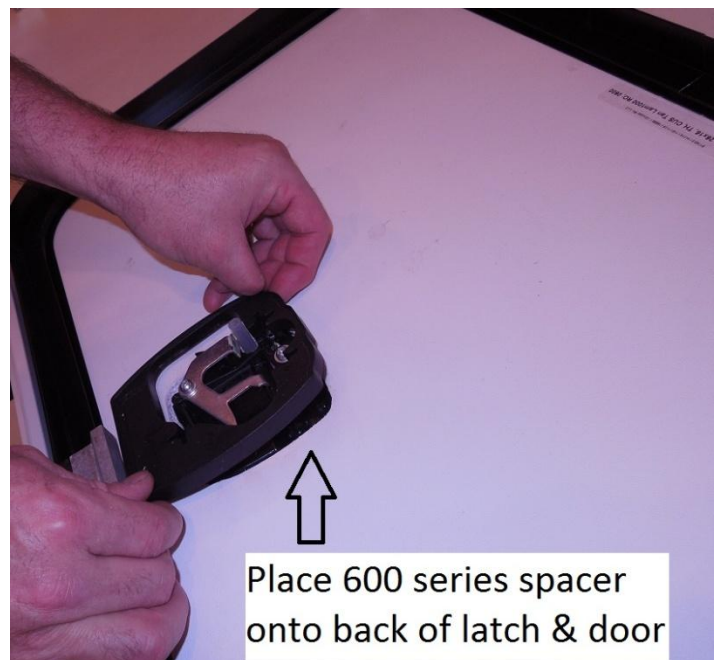
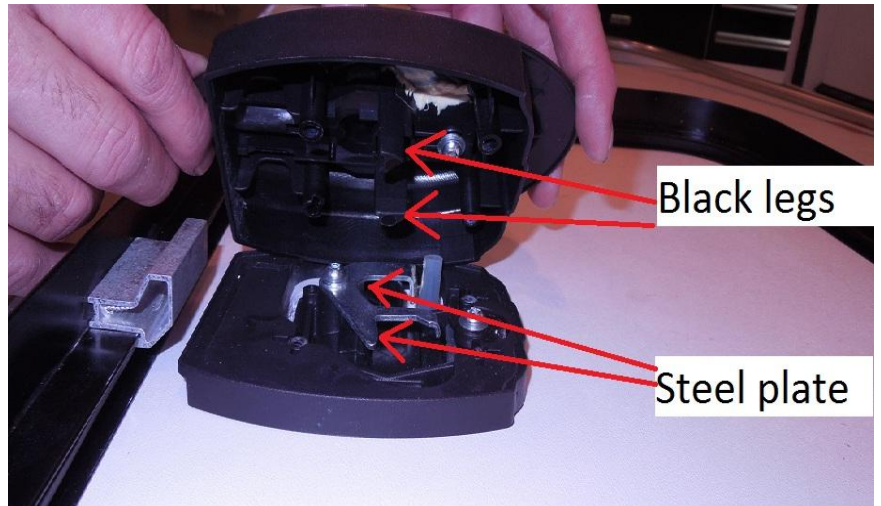


Fig.3

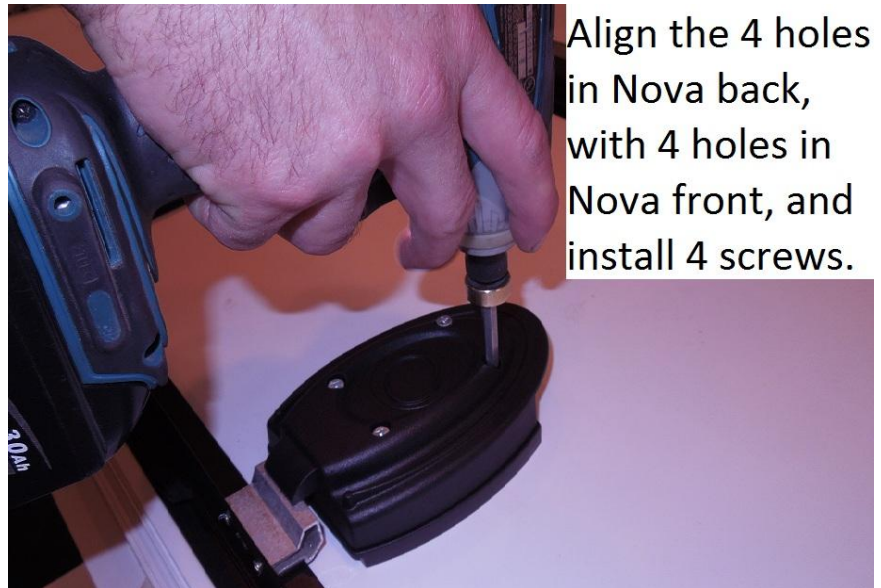
Next install Nova back onto spacer.
Be sure to align the 2 black legs (on Nova back) behind the steel plate (on Nova front) as seen in Fig.3.



Place Nova back onto spacer, being sure to align the 2 legs on back, behind the steel plate (on Nova front).

Fig.4

Align the 4 holes in the Nova back with the 4 holes/screw bosses in the Nova front and install the 4 screws. Tighten until the latch front and back are snug against the door panel. Be sure not to over-tighten or screws may strip out.



Parts needed for a 600 or 601 series door with a Nova latch (LK097 & LK098).

