

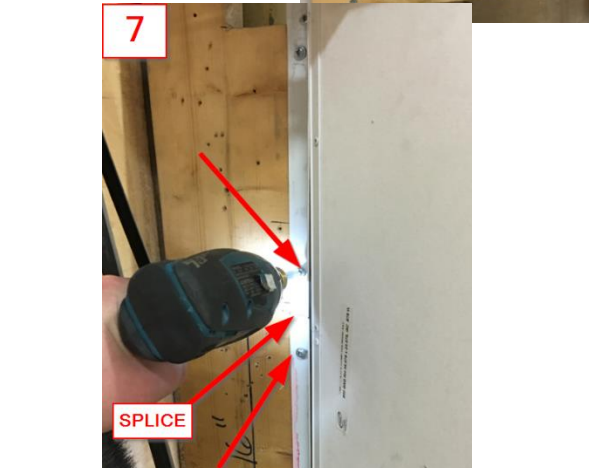
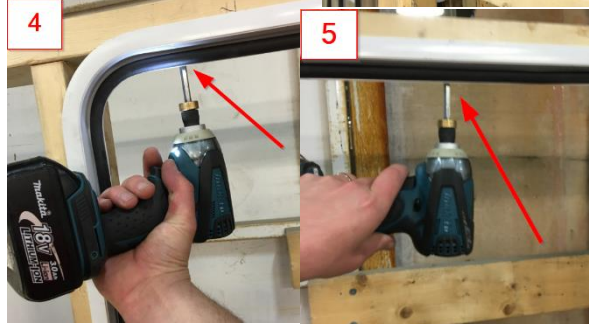
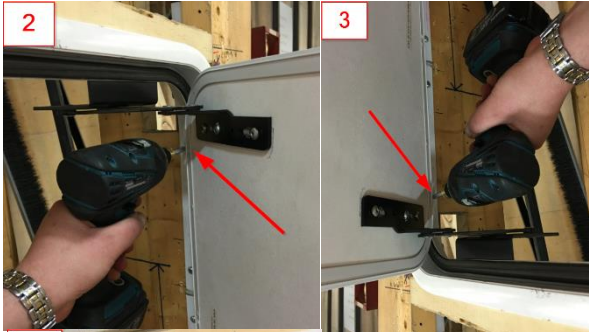
Challenger Door

Process Control Document

Date : 03/30/16

Process Title: Side Hidden Hinge Installation

Sheet :1 of 1 BY: AY



- Process** _____
- 1) Prep outer flange of door with Butyl Tape, Closed Cell Foam or a product equal to.
 - 2) Fit door tight to the top of the rough opening then anchor the door in the top hinge side corner with screw
 - 3) Add a screw in bottom of the hinge side in the outer.
 - 4) Add screw in the top opposite hinge side of the outer frame
 - 5) Add screw in the top center of the outer frame.
 - 6) Repeat steps 5&6 on the bottom of the outer frame.
 - 7) Check placement of the door, add screws at outer splice and where needed(screws should be no more than 12" apart)
 - 8) Shim at the striker as needed, add screw and tighten
 - 9) Add screw to each hinge in provided hole
 - 10) Check reveal and function after install and adjust accordingly
 - 11) Once installation is complete, seal outer flange to outside of unit
- **If there is too much of a gap by the striker, shim as needed
**Check gaps around the door in the rough opening and shim accordingly to keep a consistent reveal when tightened



