

Challenger Door

Process Control Document

12/2/2014

Keith Schwartz

5600 Patio Door Installation

Check with trailer manufacturer to determine backer location in wall and roof.

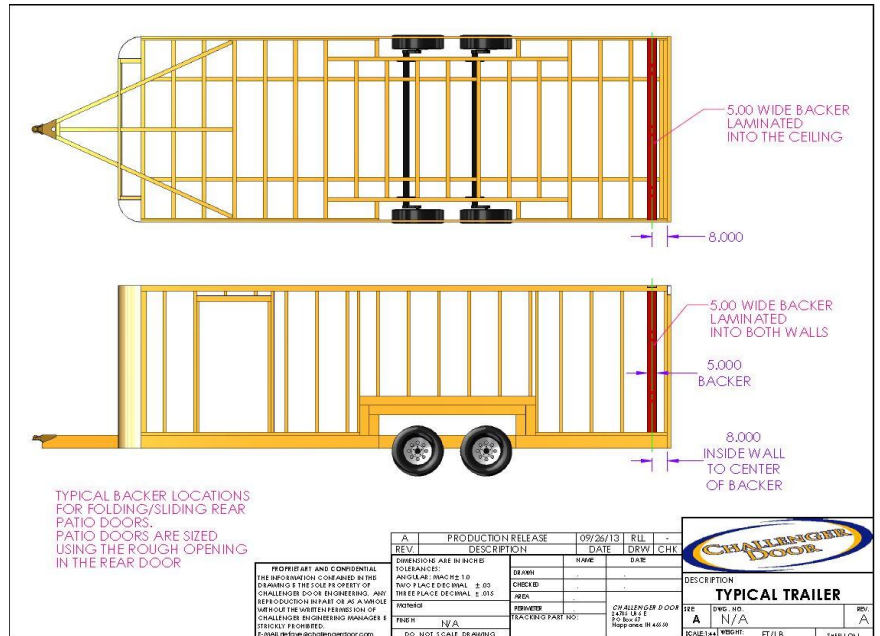
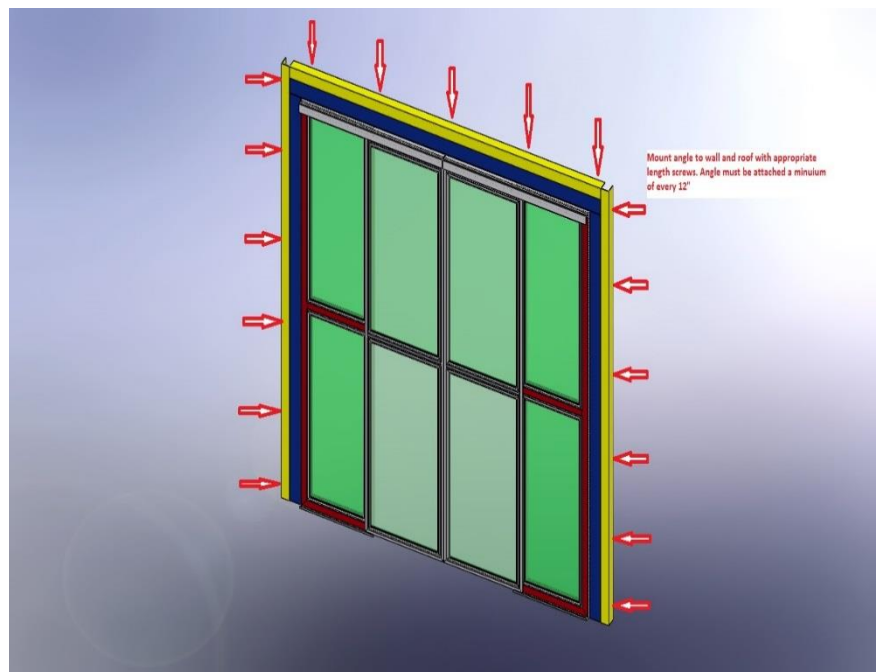


Figure 1 Challenger Door Recommended backer location

Determine location for angle on wall and roof. Make sure there is adequate clearance to close ramp/patio door. Fasten angles to wall & ceiling with appropriate length screws with a maximum of 12" between screws. Make sure all angles are the same distance from the rear of the unit. It is important that the angles on the wall are parallel to each other to assure that the doors meet properly when closed.



Challenger Door



Process Control Document

12/2/2014

Keith Schwartz

5600 Patio Door Installation

Square door frame and check to make sure doors slide properly, then fasten frame to angle every 12". After it is determined that doors function properly install the plastic guide block or Magnets to the floor at the center of the doors.

